



ARTIST'S RENDERING

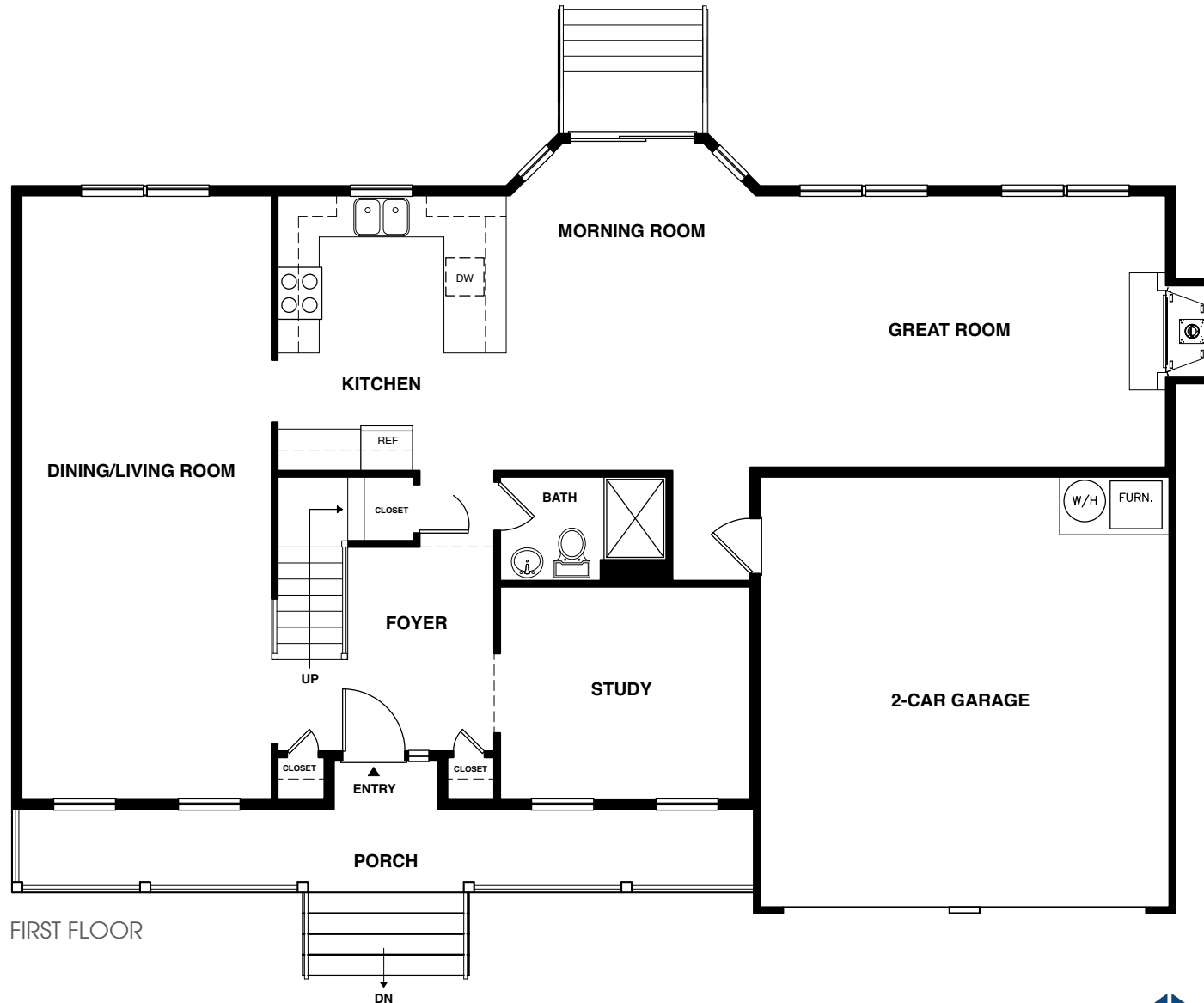
All dimensions and areas shown are approximate and subject to field conditions. Dimensions should not be relied upon to calculate square footage. Any plans or lot images do not identify any easements, storm water management areas, or other restrictions on particular lots or in the community as a whole. Wooded areas, landscaping and recreational facilities shown are for illustrative purposes only and are not to be relied upon for actual field conditions once constructed. Please consult with your Sales Representative for additional information.



# 221 WILMORE ROAD, LITTLE FALLS

highviewhomesllc.com

2,500 Square Feet | 4 Bedrooms | 2.5 Baths | Study | Great Room | 2 Attics | 2-Car Garage



Room dimensions may vary. Prices, availability, and specifications may change without notice. Some photography may be used for illustrative purposes and contain structural options or designer features that are not included as standard. Certain materials may be discontinued or substituted. Please see a community Sales Consultant to learn how you can personalize your new home with optional features and upgrades.



2,500 Square Feet | 4 Bedrooms | 2.5 Baths | Study | Great Room | 2 Attics | 2-Car Garage



SECOND FLOOR



Room dimensions may vary. Prices, availability, and specifications may change without notice. Some photography may be used for illustrative purposes and contain structural options or designer features that are not included as standard. Certain materials may be discontinued or substituted. Please see a community Sales Consultant to learn how you can personalize your new home with optional features and upgrades.

## GENERAL FEATURES

Attractive Elevation Designs with Stone Features and Maintenance-Free Vinyl Siding  
Landscaped property with Foundation Plantings  
Conventional Wood Frame Construction  
Engineered I-Joist System  
Two-Car Garage  
Personalize with Options and Upgrades  
Professional Staff to Assist with Selections

## PREMIUM CONSTRUCTION DETAILS

2" x 6" Exterior Walls  
3/4" Engineered T&G Sub-floor Glued and Nailed  
Premium Double Hung Vinyl Windows with Low e Glass  
Lifetime Warranty GAF Architectural Asphalt Roofing Shingles  
Decorative Fiberglass Entry Door 9' Ceilings on First Floor

## HIGHVIEW ENERGY EFFICIENT FEATURES

96% Forced Air Gas Furnace with Energy Efficient Digital Thermostat  
16SEER Air Condenser  
Efficient Ductwork-Mastic Sealed and Protected  
R-21 Insulated Exterior Walls  
Dupont™ Tyvek® Building Wrap  
High Efficiency Water Heater  
Energy Efficient Lighting

## WELL APPOINTED EXTERIORS

Beautiful maintenance-free exteriors  
Asphalt Driveway

Concrete Service Walks  
Covered Entry or Porch (per plan)

## EXQUISITELY DETAILED INTERIOR FINISHES

3/4" Solid Hardwood Flooring Throughout First Floor  
All Windows wrapped in 3 1/2" Mill-work  
5 1/4" Base Molding  
Stained Oak Stair Treads and Rails with Painted Spindles  
Satin Nickel Door Hardware  
Designer Lighting Fixtures in Foyers, Dining Room, Halls and Bath  
Decorative Light Switches and Recessed Lighting in Kitchen and Family Rooms  
Choice of Carpet Style and Color(s) on Second Floor

## PERSONAL CONVENIENCE

Ample Attic Storage  
Structured Wiring Package Included for Cable, Phone and Internet  
Premium Garage Door Opener/Remotes  
Laundry Room on Second Floor  
Washer and Dryer (optional)  
Ventilated Wire Shelving in all Closets  
Doorbell at Front Door

## LUXURIOUS KITCHENS

Maple Cabinet Doors in Choice of Style/Finish  
Convenient Granite Work Center Island and Eating Area  
Granite Counters in Choice of 3 Colors  
Stainless Steel Under Mount Sink  
Moen® Lever Faucet with Pull-out Spray  
Whirlpool® Stainless Steel Appliances with 30" Gas Range, Built-in Microwave and Dishwasher  
Enclosed Pantry with Ventilated Wire Shelving (per plan)

## ELEGANT MASTER SUITES

Mirrors Over Vanities  
Maple Doors in Choice of 3 Colors  
Ceramic Tile Floors in Selected Choice of Colors  
Glass Enclosed Tile Shower  
China Sink and Toilet  
Moen® Faucets  
Spacious Walk-in Closets with Built-in Ventilated Wire Shelving

## BATHROOMS

Maple Doors in Choice of 3 Colors  
Cultured Marble in Choice of 3 Colors  
Ceramic Tile Floors in Selected Choice of Colors  
Sterling® Vikrell Tub with Tiled Surround  
Mirror Over Vanity

## SAFETY AND CODE COMPLIANCE

200 Amp Circuit Breaker Panel  
Smoke and Carbon Monoxide Detectors Hard-wired with Battery Back-up  
Arc Fault Circuits Wired to N.E.C.  
All devices U.L. Approved (per code)  
PEX (Cross-link Polyethylene) Flexible Water Pipes  
Public Water and Sewer  
Electric, Telephone, Gas and Cable Service  
Unfinished Basement (Excludes 221 Wilmore Road)

